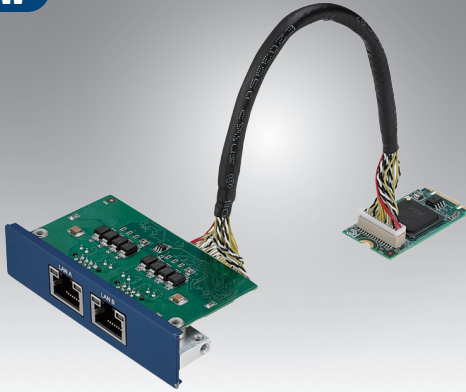


PCM-34R2GL

2-Port Gigabit Ethernet, Intel® I350,
2x RJ45, B+M Key (2242, PCIe1)

NEW



Features

- Meets Advantech iDoor technology standard
- Dual Gigabit Ethernet Port (RJ45)
- M.2 2242 B+M Key compliant (PCI Express)
- PCIe Gen2 x1 bandwidth specification
- Compatible with embedded automation PC UNO-1/2/3/4 series
- Compliant with FCC/CE Class A Certification
- Supports 32/64-bit Windows 7/8/10 and Linux
- Operation temperature 0~60 degree support

Introduction

The PCM-34R series can enhance network performance, security, reliability, and provide more flexible network configuration options for specific application scenarios. This is a flexible design that enables customers to customize their features with iDoor Technology.

Specifications

General

- **Bus Type** M.2 2242 B+M Key compliant
- **Interface** PCIe Express
- **Connectors** 2 x RJ45
- **Certification** CE, FCC class A
- **Dimensions** Module: 42 x 30 x 12.4 mm (1.65" x 1.18" x 0.49")
I/O Plate: 81 x 19.35 x 39 mm (3.19" x 0.76" x 1.54")
- **Power Consumption** Typical: +3.3 V @ 3 W

Communications

- **LAN Controller** Intel® I350-AM2 LAN Controller
- **Speed** 10/100/1000 Mbps
- **Support** IEEE 1588

Protection

- **Isolation Protection** 1,500 V_{DC}
- **ESD Protection** 4KV (Contact), 8KV (Air)
- **EFT Protection** 1,000 V
- **Surge Protection** 1,000 V_{DC}

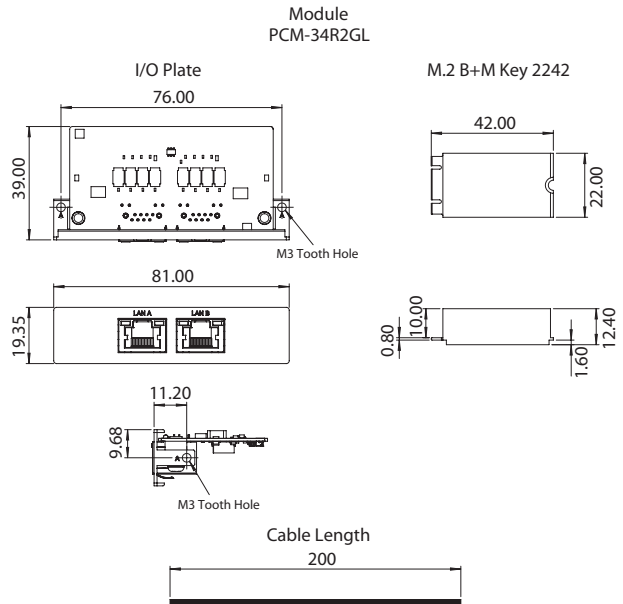
Software

- **OS Support** Microsoft® Windows® 7/8/10, Linux

Environment

- **Operating Humidity** 10 ~ 95% RH @ 40 °C/104 °F, non-condensing
- **Operating Temperature** 0 ~ 60°C (32 ~ 140°F)
- **Storage Temperature** -20 ~ 80°C (-4 ~ 176°F)

Dimensions



Ordering Information

- **PCM-34R2GL-AE** 2-Port Gigabit Ethernet, Intel® I350, 2x RJ45, B+M Key (2242, PCIe1)

Optional Accessories

- **1960070469T011** Heat Sink R1 w/ glue for LAN Controller (20 x 20 x 10 mm)