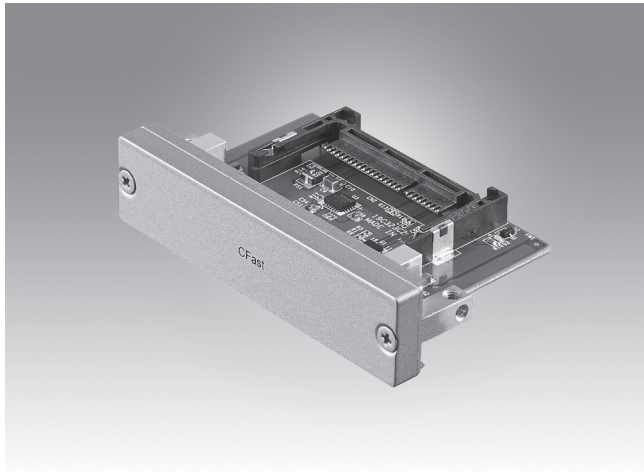


PCM-23C1CF-CE

1 CFast Slot with Cover Protection



Features

- Meets Advantech iDoor technology standard
- PCM-23C1CF includes single CFast II slot which utilizes existing internal HDD cable
- PCM-23C1CF includes a captive screw type cover for CFast card protection
- Supports UNO-1372 DIN-Rail controller series
- Supports UNO-2473G-E3 Embedded Automation PC
- Supports TPC-B500/B510 modular panel computers series
- Supports TPC-1x51 (B) thin client panel computers series



Introduction

The PCM-23C1CF-CE is CFast card adapter module in Advantech iDoor series. No driver required. It is compatible with Windows, Linux and all system following PCI Express® Mini Card Specification Revision 2.0. PCM-23C1CF-CE supports data transfer from CFast 2.0 memory cards and allows the user to access the storage without opening the chassis offering storage with longer MTB repairs and quick maintenance. This is a flexible design that enables customers to customize their features with iDoor Technology.

PCM-23C1CF Specifications

General

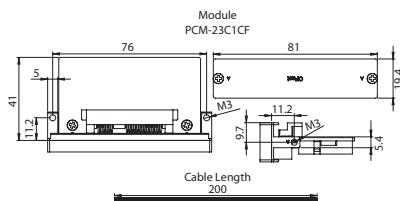
- **Dimensions** 19.4 x 81 x 41 mm
- **Features** I/O plate to SATA connector
- **Form Factor** I/O Plate
- **Contents** I/O module, bracket
- **Operating Temperature** -20 ~ 60°C (-4 ~ 140°F)
- **I/O Port** 1 slot with CFast Type II connector
- **Color** Silver

Ordering Information

- **PCM-23C1CF-CE** SATAII 3G/Sec to CFast
- **1700033548-01** The CFast power cable for UNO-1372G series
- **1700033645-01** The CFast power cable for TPC-1x51(B) series
- **1700033614-01** The CFast power cable for TPC-B500/510 series

* The power cable is essential for work normally.

PCM-23C1CF Dimensions



PCM-23C1CF User scenario

